

PH 2/1 Stem Fitting

The fixture is designed based on the principle of a reflective three-shade system, which directs the majority of the light downwards. The shades are made of mouth-blown opal three-layer glass, which is glossy on the top and sandblasted matt on the underside, giving a soft and diffuse light distribution.



Product info

Mounting

Suspension type: Cable 2x0,75mm². Canopy: Yes. Cable length: 3,5m.

Finish

High lustre chrome plated. White opal glass.

Materials

Shades: Mouth-blown white opal glass. Body: High lustre chrome plated, brass. Socket cover: High lustre chrome plated, spun aluminium.

Sizes and weights

Width x Height x Length (mm) | 596 x 551 x 596 Max 3.5 kg

Class

Ingress protection IP20. Electric shock protection II w/o ground.

Specification notes

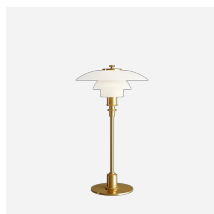
The innovation of light sources is ongoing. Consequently we only inform about the max. wattages. On www.louispuulsen.com we update a list of recommendable light sources.

Light source

3x20W E14



Product family



PH 2/1 Table



PH 2/1 Wall



PH 2/1 Pendant

Product variants

Light source

3x20W E14

Design

Poul Henningsen

Weight

3.481

Finish

High lustre chrome plated

Spare parts & accessories

Product	Variant number
PH 2-1, middle shade glass	5741084940
PH 2-1, lower shade glass	5741084953
PH 2-1, top shade glass Table/Wall	5741084937
PH 2-1, springholder w/springs	5741086333
PH 2-1, glassbom.topshade w/bal.ring	5741084885
Canopy classic polished chrome plated V2	5741481721